

Proposal for improvement of Road and Port



Roads and Ports Infrastructure Committee, JCCIC

Contents



1. Roads in Chennai Area

- 1) Complete Roads Construction to Ennore Port
- 2) Improve SH57 around Oragadam Area
- 3) Promote Key Trunk Roads for CBIC (Chennai Bangalore Industrial Corridor)

2. Ports in Chennai Area

- 1) Improve Operation of Chennai Port
- 2) Improve Service of Ennore Port

1-1) Complete Roads Construction to Ennore Port

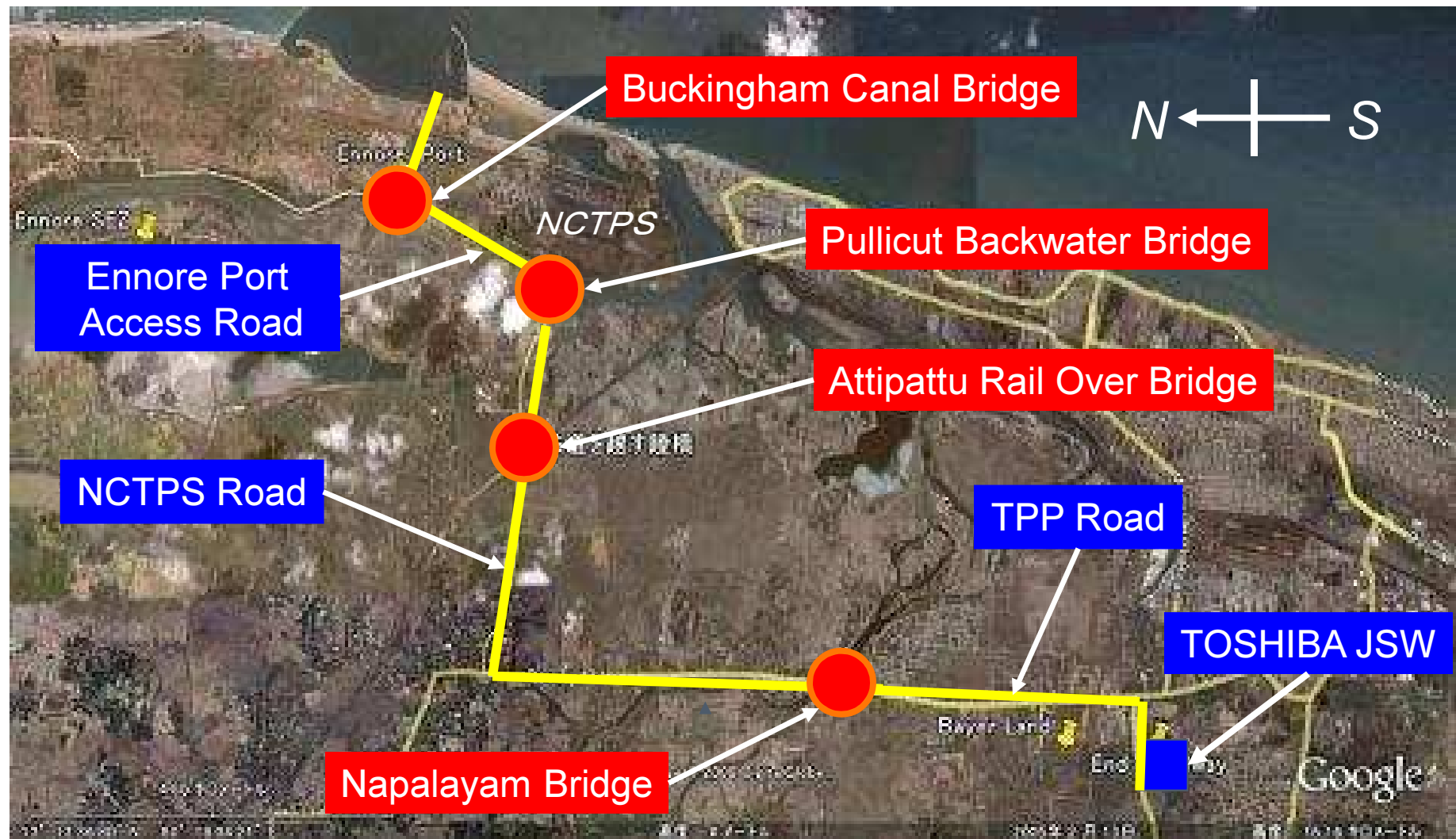


- Complete **by June 2014** before starting shipment of Over Dimension Cargo
- Share **Project Master Plan** and follow up the progress in **Monitoring Committee** in order to avoid the further delay

	Target Date
Ennore Port Access Road Incl. <u>Buckingham Canal Bridge</u>	Jun. 2014
NCTPS Road Incl. <u>Attipattu Rail Over Bridge</u> , <u>Pulicat Backwater Bridge</u>	Jun. 2014
TPP Road (EMRIP) Incl. <u>Napalayam Bridge</u>	Dec. 2013
Manali Oil Refinery Road (EMRIP)	Sep. 2013
Ennore Express Way (EMRIP)	Dec. 2013
Inner Ring Road – Moolakadai to Manali Junction (EMRIP)	Sep. 2013

1-1) Complete Roads Construction to Ennore Port

- Access Road to Ennore Port



1-1) Complete Roads Construction to Ennore Port

- Progress of major four (4) bridges

Buckingham Canal Bridge (Ennore Port Road)



Pullicut Backwater Bridge (NCTPS Road)



Attipattu Rail Over Bridge (NCTPS Road)



Napalayam Bridge (TPP Road)



1-1) Complete Roads Construction to Ennore Port

- Progress of major four (4) bridges
 - Attipattu Rail Over Bridge is most critical.
 - **Expect to have cooperation of Southern Railway**



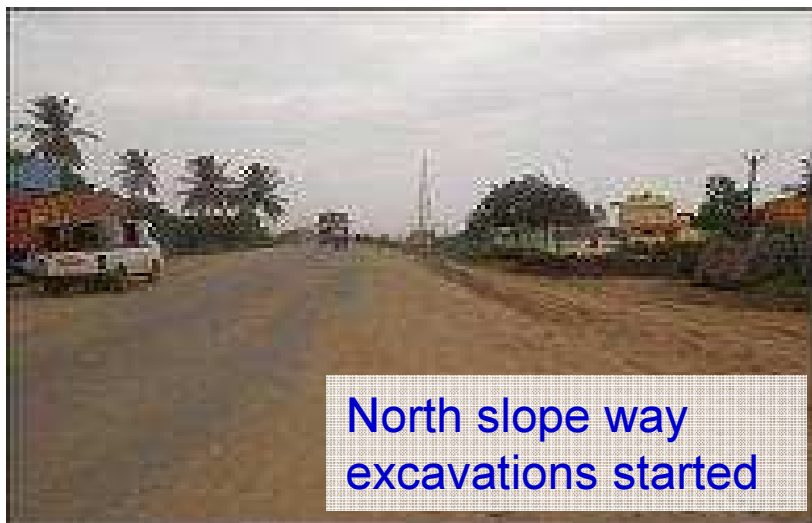
4.2 Kms from Port Gate Attipattu Rail Over Bridge

Span 8 = 1 x 13.9 , 13.4 , 9.6 , 15.1 , 15.1 , 10 , 13.4 , 13.9

Slight Gradient

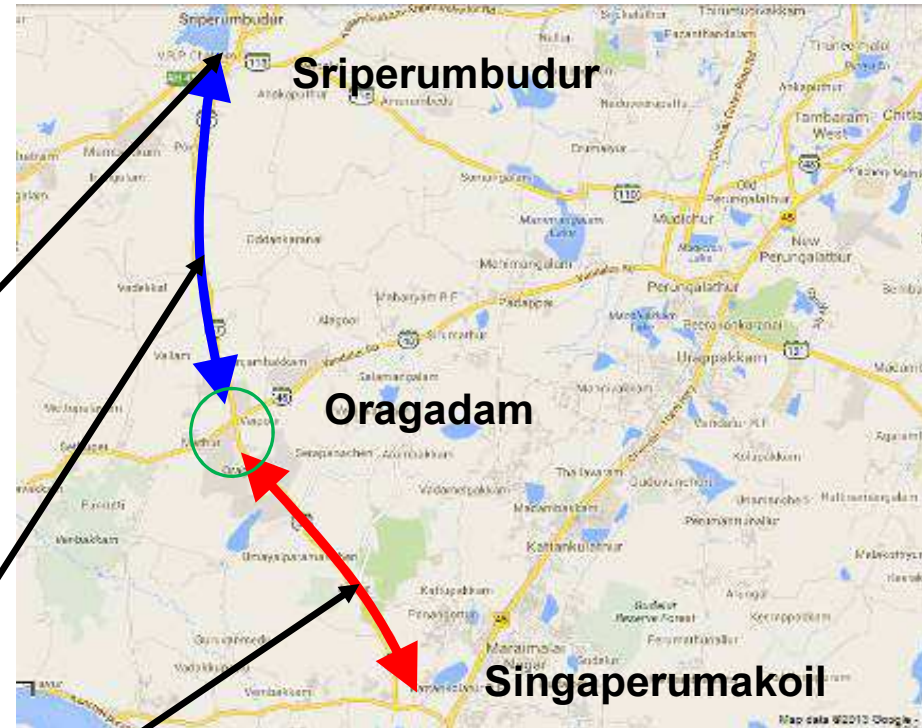
1-1) Complete Roads Construction to Ennore Port

- Progress of TPP road construction



1-2) Improve SH57 around Oragadam Area

- Current status of SH57
- 4-lane road widening is in progress, but in some areas is not started yet.
- **Expect to complete road widening through SH57**



Junction with HN4



North side of Oragadam

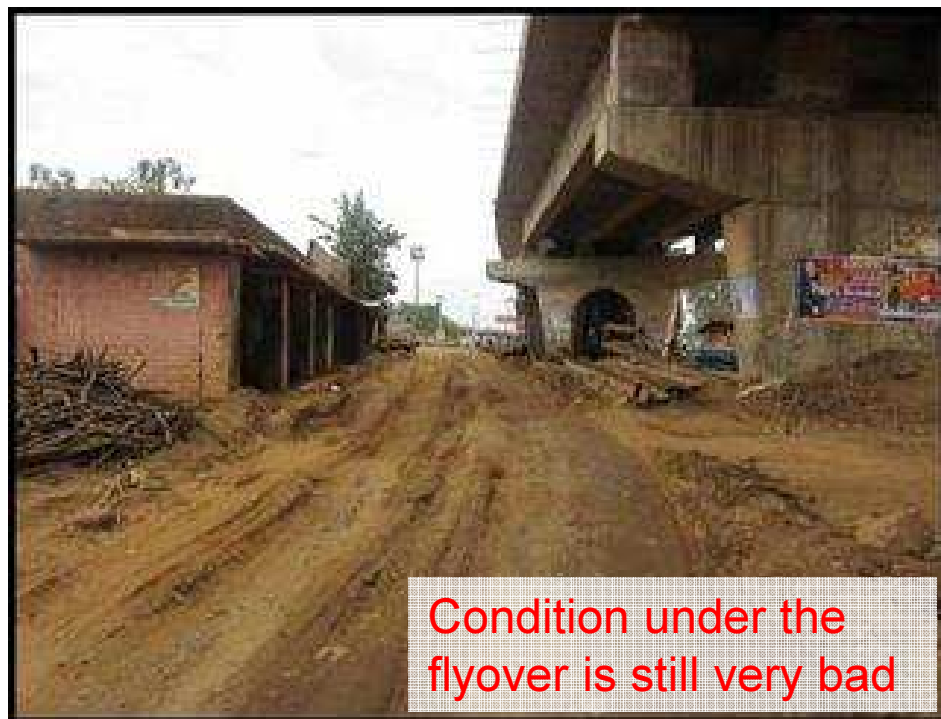


South side of Oragadam



1-2) Improve SH57 around Oragadam Area

- Current status of Oragadam Junction
 - One lane of flyover has already opened. We are really appreciated.
 - **Expect to complete the construction of flyover including service road by Dec. 2013.**



1-3) Promote Key Trunk Roads for CBIC

- To realize “CBIC”, It is essential that key trunk roads connecting industrial cluster, port and NH are developed. Since Chennai is one of the node of CBIC, realization of CBIC depends on how improve the current logistics situation in Chennai

Early implementation of “Ring road”

- Enhance accessibility to Chennai and Ennore port which can help to avoid traffic congestion in the city.
- It also would be possible to deduct a lead time for production and transportation.

Outer Ring Road

- Need to expedite any process of phase 2 of this construction

Peripheral Road

- GoTN and JICA decided it will be early-bird project of CBIC. Early implementation is highly expected.



Oragadam Junction



SH57(Singaperumakoil)



Improvement of SH57

- Most essential road for logistics of Japanese companies in Oragadam.
- Need to be widening of SH57 and complete construction of flyover and service road

2-1) Improve Operation of Chennai Port

- Current Status of Tirruvattiyur Trailer Parking Yard



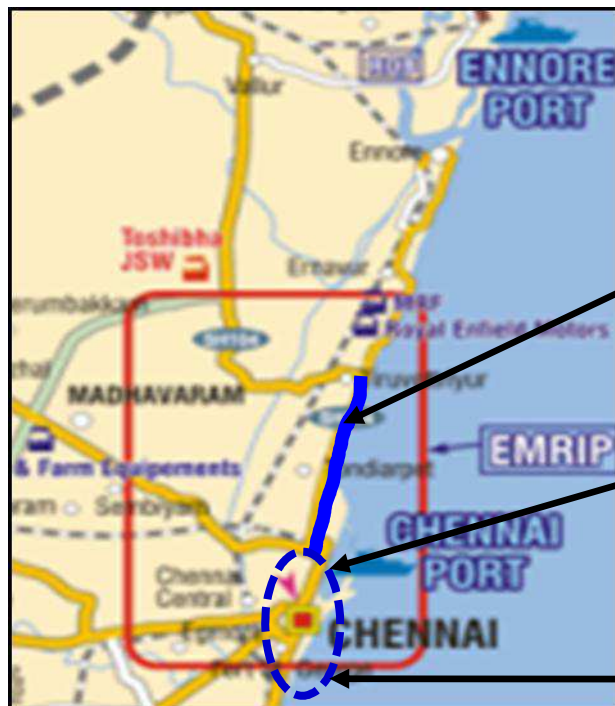
- Around 400 trailers are to be parked. Sure to contribute to load congestion solving.
- **Expect to complete and start operation ASAP**

Tirruvattiyur Trailer Parking Yard as on 30th Sep



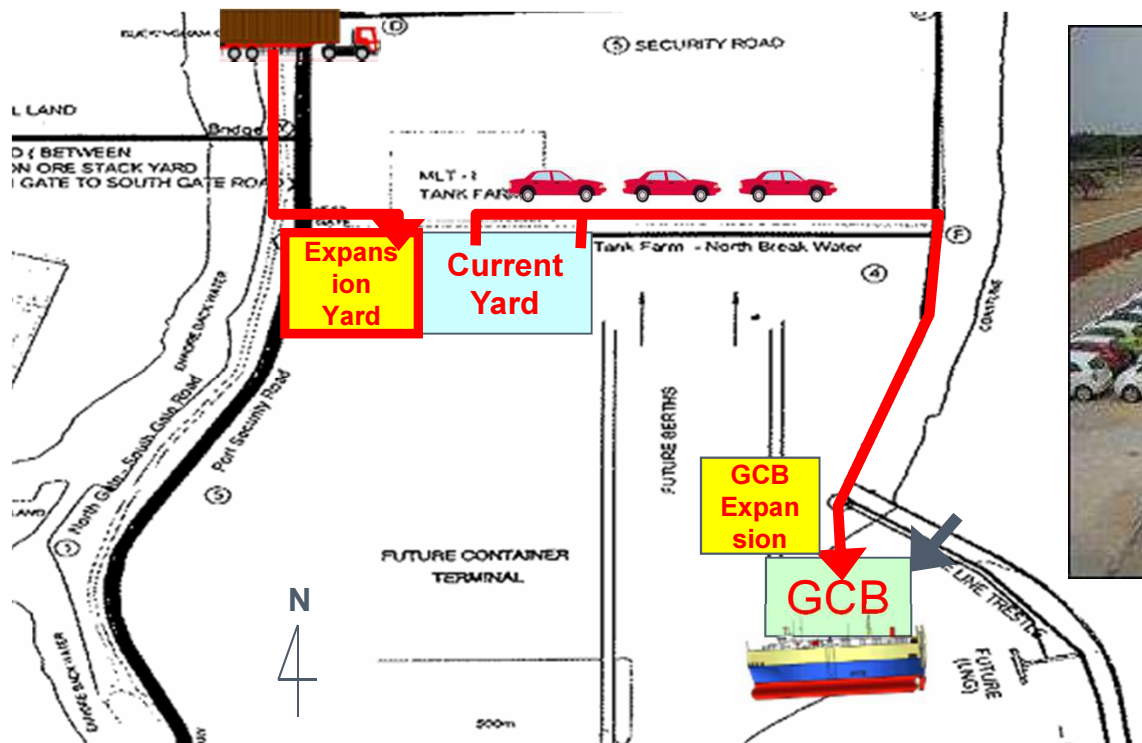
2-1) Improve Operation of Chennai Port

- Chennai port needs an intensive study to find solutions to improve port operation system such as 24 hour operation of the port, effective way of gate access, simplification of security check etc.
- Government of India and JICA has decided to start a basic study to find essential and fundamental problem in Chennai port as well as effective methods to solve problems. JCCIC have high expectation that the study clearly shows effective solutions for current situation, and that ChPT and GoTN would implement all solutions in the results of study.



2-2) Improve Service of Ennore Port

- Expansion of Car Parking Yard
 - Car parking yard capacity is 7000 vehicles (141,000 m²)
 - Currently we are facing congestion in the parking yard, especially each month end. This causes unloading delay, deterioration of trailer flow, and finally vessel sail delay. And export volume is assumed to be increased in future
 - **Expect to expand car parking yard as soon as possible**



2-2) Improve Service of Ennore Port

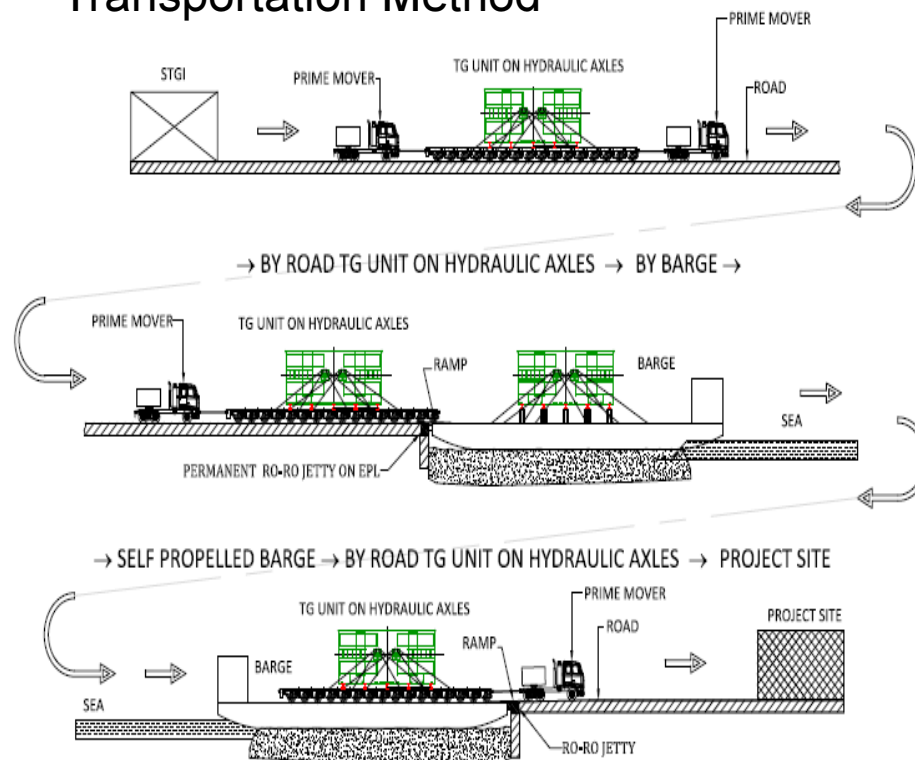
- Revision of Port Charge
 - Port charge revision was applied by -36% from Jan. 2013. But still level of port charge is higher than other international ports.
 - **Expect to reduce port charge additionally based on the volume**

	Ennore		Chennai (India)	Singapore (Asia)	Amsterda m (Euro)	Tacoma (USA)
	New Tariff	Old Tariff				
Pilotage (USD/GRT)	24,666	38,540	23,829	4,290	29,348	18,397
Port Dues (USD/GRT)	15,942	24,910	9,621	3,430	8,618	3,000
Berth Hire (USD/GRT/h)	25,989	40,608	9,780	16,404	2,007	13,053
Other charges (USD)	11,674	18,241	10,684	2,200	7,085	4,620
Total (USD)	78,272	122,299	53,913	26,324	47,058	39,070

2-2) Improve Service of Ennore Port

- Study for unloading of Over Dimension Cargo
- To use Self Propelled Barge with temporary Jetty is under study
- **Expect to corporate studying most efficient way to transportation**

Transportation Method



Temporary Jetty at the coast



Slab Block & Role Off Way to be prepared at Jetty

2-2) Improve Service of Ennore Port

- Swell Problem in Ennore Port



Breakwater constructed exposing harbour basin to SW'ly monsoon sea & swell effect; sea and swell easily enters harbour and hits GCB in perpendicular direction

- Due to vessel berths at General Cargo Berth in East-West direction, the vessel's broad side lies exposed to sea and swell.
- Since harbor basin is exposed to sea and swell due to present breakwater construction, the berth experiences southerly sea and swell during SW'ly monsoon (i.e. March to November).
- Pure Car Carrier being light vessels by weight, they are affected more than conventional vessels.
- Such results in vessel's movement while at berth, such movements are roll, heave, sway.