

Proposal for Road and Port improvement



Roads and Ports Infrastructure Committee

1. Roads in Chennai Area

- 1) Complete Roads Construction to Ennore Port (P)
- 2) Improve SH57 around Oragadam Area
- 3) Promote Key Trunk Roads for CBIC (Chennai Bangalore Industrial Corridor)

2. Ports in Chennai Area

- 1) Improve operation related Ports
- 2) Improve Service of Ennore Port

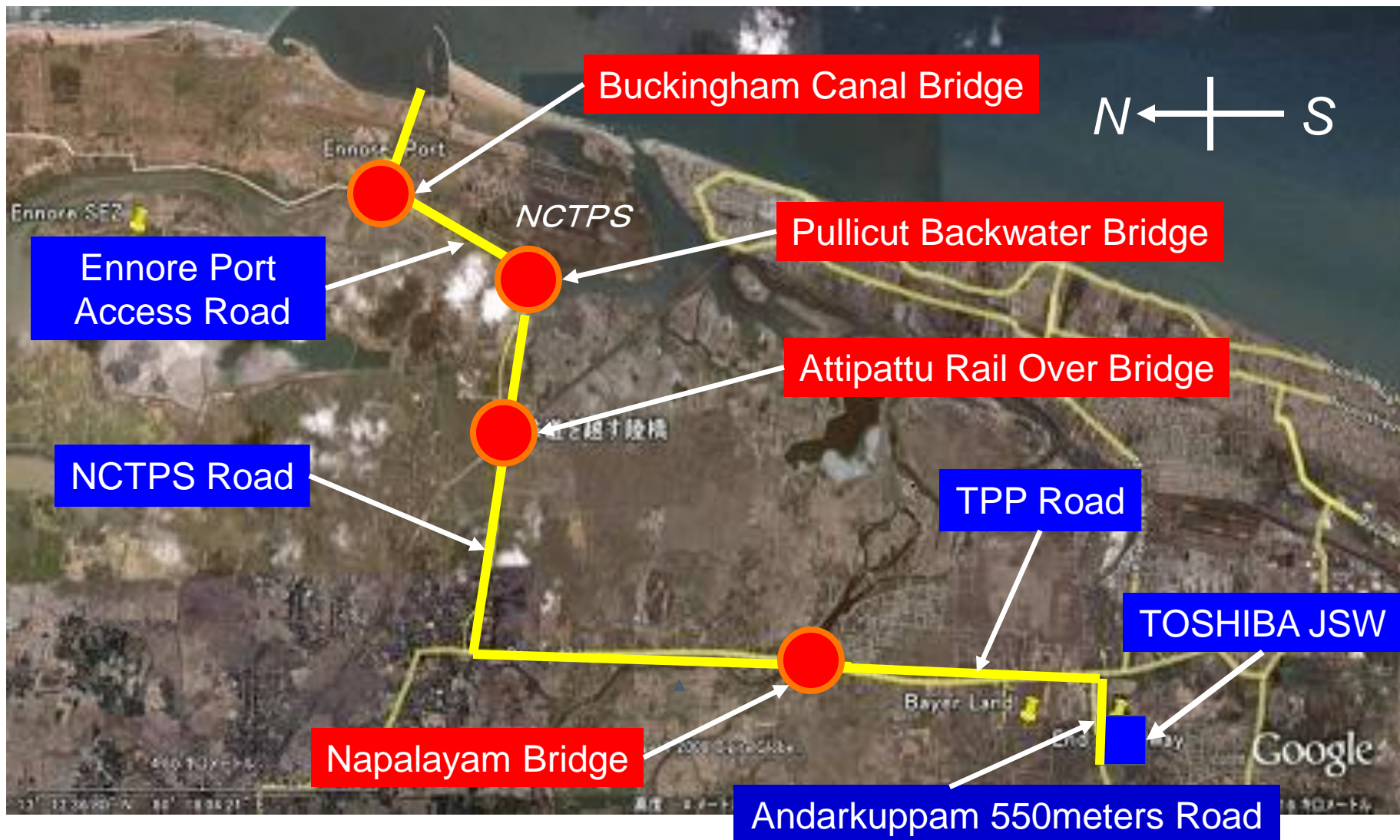
1-1) Complete Roads Construction to Ennore Port

- Committed by GoTN to Complete all construction works for roads and bridges around Ennore port **by October 2014** before starting shipment of Over Dimension Cargo
- Yet to be finished those works as mentioned below;

Major delay road	Target Date
Ennore Port Access Road Incl. <u>Buckingham Canal Bridge</u>	Nov. 2014
NCTPS Road Incl. <u>Attipattu Rail Over Bridge</u>	Nov. 2014
Andarkuppam 550meters Road	Nov. 2014

1-1) Complete Roads Construction to Ennore Port

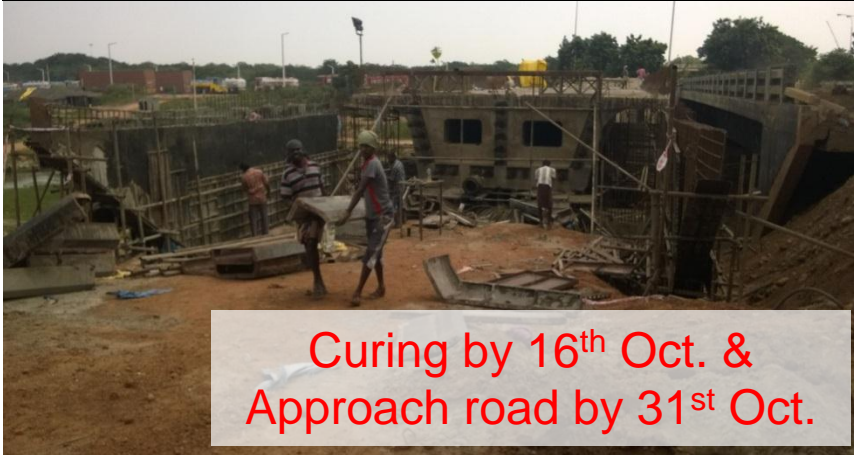
- Access Road to Ennore Port



1-1) Complete Roads Construction to Ennore Port

- Progress of major four (4) bridges

Buckingham Canal Bridge (Ennore Port Road)



Pullicut Backwater Bridge (NCTPS Road)



Attipattu Rail Over Bridge (NCTPS Road)



Napalayam Bridge (TPP Road)



1-1) Complete Roads Construction to Ennore Port

- Progress of Andarkuppam - TPP road construction

Andarkuppam road has been started on 11th Oct.



2 Minor Bridges by 18th Oct.



South Approach road was completed



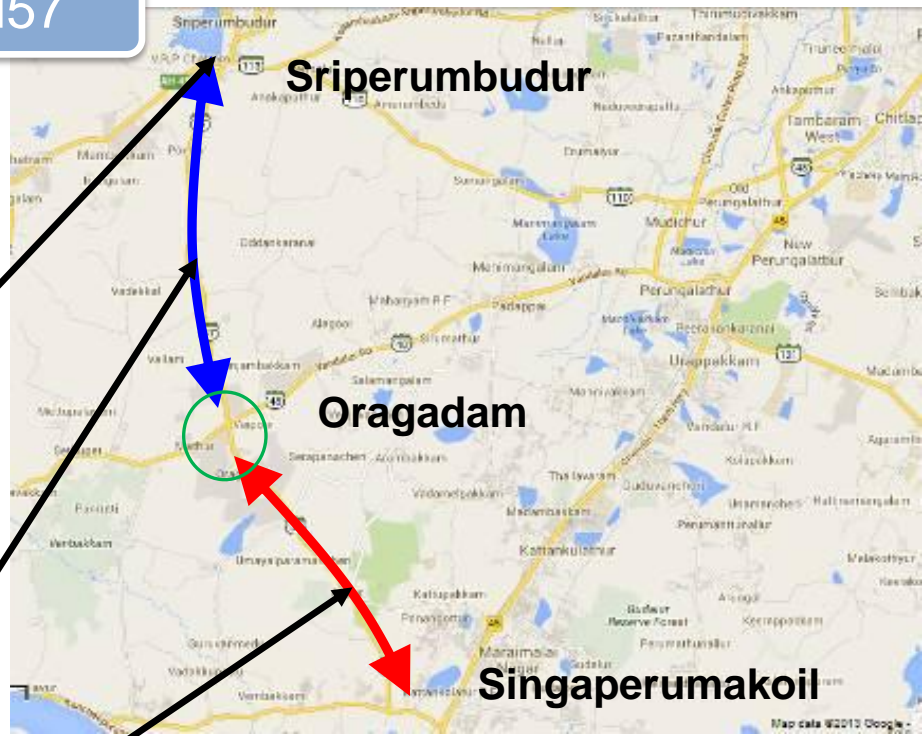
North Approach road by 18th Oct.



1-2) Improve SH57 around Oragadam Area

Current status of improvement on SH57

- Road widening work at Junction to NH4 and southern sector (Oragadam and Singaperumakoil) are priority
- Committed by GoTN to complete all work by Sep 2014



Junction with HN4

Not started widening yet



North side of Oragadam

Almost 4-lane done
6-lane is in progress



South side of Oragadam

Started to widening (removing trees)

1-2) Improve SH57 around Oragadam Area

Current status of Oragadam Junction

- One lane of flyover has already opened.
- Improvement of service road under the flyover is critically important
- **Committed by GoTN to complete all work by Sep 2014. .**



Under the flyover this side is not started



Flyover connected all span waiting to complete



Is this side started?

1-3) Key Trunk Roads for CBIC

- Under CBIC initiatives, **Early implementation of “Ring road”** is priority.
- **Connecting between Northern port access road and ORR, and SH57** are priority sector in Ring road project



Outer Ring Road

- Need to expedite any process of phase 2 of this construction

Peripheral Road

- GoTN and JICA decided it will be early-bird project of CBIC. Early implementation is highly expected.

Priority sector

Northern port Access Road

- Connecting to ORR is efficient for easier access to Ennore as well as Katupali.
- JCCIC requests GoTN to ensure that the sector between Ennore port and Minjur becomes part of the Northern port access road.

Improvement of SH57

- Need to be widening of SH57 and complete construction of flyover and service road

2-1) Improve Operation of Chennai Port

- Current Status of Tirruvattiur Trailer Parking Yard



- Around 400 trailers are to be parked. Sure to contribute to solve load congestion problem.
- Committed by GoTn to start using the park from Sep 2014
- Need to improve operation to organize each cars and trailers.

Tirruvattiur Trailer Parking Yard as on 30th Sep



2-1) Improve Operation related to Ports (1)

Current situation 1 : Duration of receiving dry container in Chennai Port

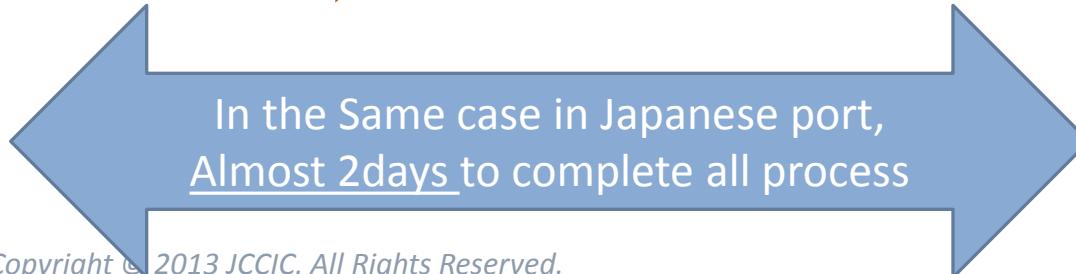
Example of a Japanese company (unit: day)

※Average data in this fiscal year till September

BOE Filed date (Bill of Entry)	Assessment by custom	Duty paid	Examination on cargo	Truck Departure	Site arrival	Total days
6.3	5.4	0.8	1.3	0.9	1.2	15.7



In Japan, Almost 3 hours to complete "Entry process"



In the Same case in Japanese port,
Almost 2days to complete all process

2-1) Improve Operation related to Ports (1)

Current situation 2 : Record of Accident regarding custom clearance in Chennai

Survey by JCCIC

The time period of this survey is January 1st to September 3rd

System failure issue			
Occur	Settle	Issue	result
7-Jan	8-Jan	System failure in Airport Custom	Delayed of import/export declaration process
11-Feb	15-Feb	System failure in Airport Custom	Suspended import/export declaration process
17-Feb	18-Feb	ICE-GATE system update	Suspended Custom clearance process
26-Feb	28-Feb	System failure in Airport Custom	Suspended import/export declaration process
26-Mar	27-Mar	System failure in Airport Custom	Suspended import/export declaration process
16-Apr	17-Apr	ICE-GATE system failure	Suspended Custom clearance process
21-Apr	22-Apr	ICE-GATE system failure	Suspended Custom clearance process
5-Jun	6-Jun	Printer broken	Suspended Custom clearance process
23-Jun	24-Jun	System failure in Airport Custom	Delayed of import/export declaration process
10-Jul	15-Jul	ICE-GATE system update	Suspended Custom clearance process
25-Aug	26-Aug	ICE-GATE system failure	Suspended Custom clearance process
2-Sep	3-Sep	ICE-GATE system failure	Suspended Custom clearance process

Lack of staff in custom clearance			
15-Jan	17-Jan	lack of staff in Custom clearance	Delayed of import/export declaration process
4-Apr	5-Apr	absence of staff in custom clearance	Delayed of import/export declaration process
11-Jun	20-Jun	absence of staff in custom clearance	Delayed of import/export declaration process

2-1) Improve Operation related to Ports (1)

(1) Current situation

- Procedure for import/export in ports around CHENNAI is so much obscure due to frequent modification of the rule which even officials in the port has not been aware.
- Some of on-line application for tariff exemption such as EPCG license scheme has not been operated in effective manner.
(ex) An application submitted by on-line is appraised by manual basis. Officials in ports need to obtain each approvals by paper documents.
- Frequent system failure occurred so that any cargo could not pass through custom clearance till system recovered.
- Officials in ports couldn't show up at the custom clearance in case of meetings and staff transfer (No support from other officials)

2-1) Improve Operation related to Ports (1)

(2) Existing problems

- On-line application system is not working effectively for shortening time in custom procedure.
- Modification of the rules would not be disseminated to users as well as to officials in custom clearance
- Officials may not be able to take on a lot of applications due to lack of number of officials.

(3) Possible solutions

- Review of on-line application system, and operate in effective manner
- Having a meeting with users and officials in custom clearance for explaining new/modified rules of procedure before it comes into effect.
- Increasing number of officials in custom clearance for the purpose of user-friendly services

2-1) Improve Operation related to Ports (2)

● Simplification of Port Entry Regulation for Foreigners

(1) Current situation

- Foreign nationals who belong to port service company in the port are required to apply for obtaining “port entry pass” every time when they need to enter the port, despite the fact that they have to work inside the port almost every day.
 - Application has to be done 2 days before of entry to the Immigration.
 - Applicants must take 2 days gap after last entry to next entry.
 - Procedure is not disclosed in writing which causes different and arbitrary treatment for each application.
- Disable to enter the port without application even in emergency cases.
- Indian nationals are able to take 1 year entry pass

2-1) Improve Operation related to Ports (2)

● Simplification of Port Entry Regulation for Foreigners

(2) Existing problems

- There is no Multi-Entry-Pass towards foreigners who work in port regularly.

(Ref. Required Documents for every application)

Pass Port original / Immigration arrival stamp / Visa / Residential permission / Letter from company to assure the foreigners / Application form

(2) Possible solutions

- Issuing Multi-Entry-Pass at least for a year for such regular workers likewise Indian nationals, as one of same employees of the port service company.

2-1) Improve Operation related to Ports (3)

● Improvement of Gate operation in Chennai Port

(1) Current situation

- Only TWO gates are available in Chennai port
- Serious congestion happens around Chennai port due to gate operation as well as existing narrow roads in backyard of port.

(2) Possible solution for mitigating congestion

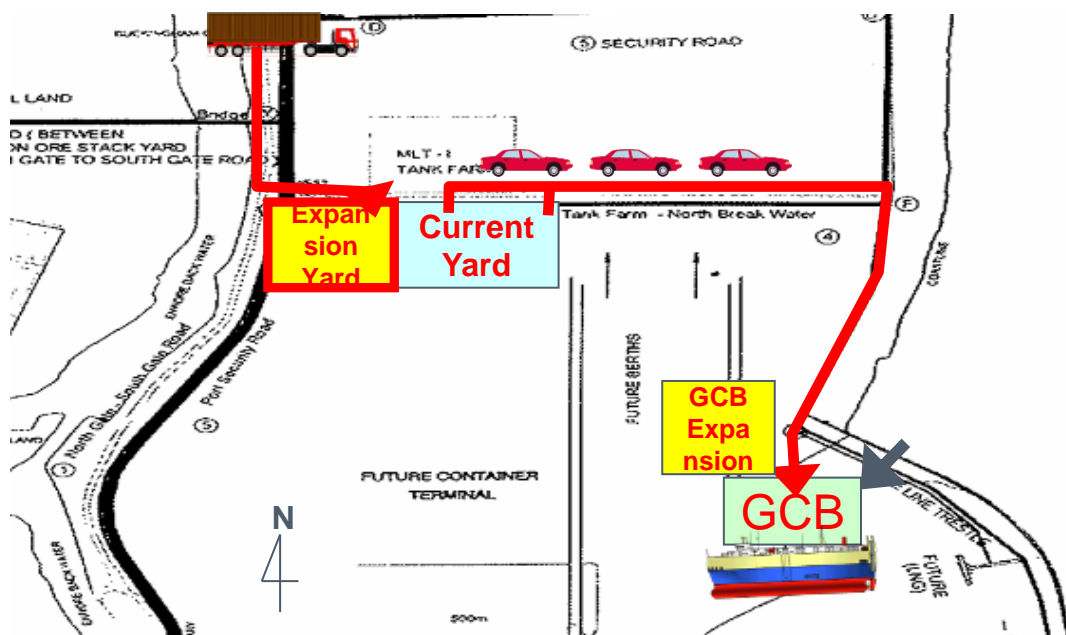
- Identify one gate for utilizing as “exit” only
- Allocate one gate to operating companies of container terminal and entrust them to manage the gate.

(3) JICA project “The Project on Improvement of Chennai Port Operation”

“The Project by JICA on “Improvement of Chennai Port Operation””, which includes improvement of gate management as mentioned above, has been started. Request to ChPT to **cooperate with JICA to find a solution** for gate operation to mitigate congestion around the port.

2-2) Improve Service of Ennore Port (1)

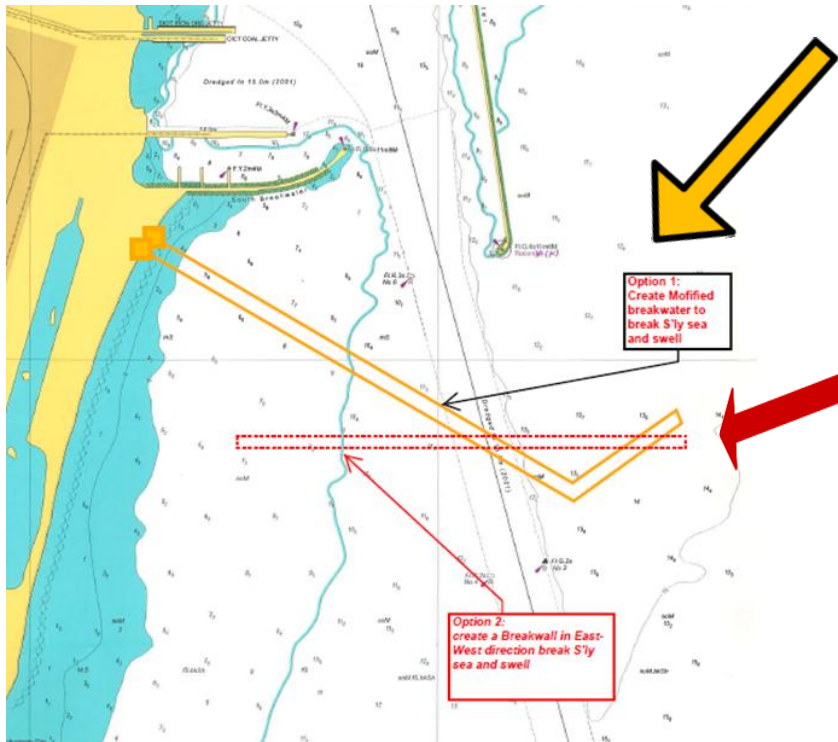
- Expansion of Car Parking Yard
 - Car parking yard capacity is 7000 vehicles (141,000 m²)
 - Facing congestion in the parking yard, especially each month end that causes unloading delay, deterioration of trailer flow, and finally vessel sail delay.
 - **Expect to expand car parking yard as soon as possible, since** export volume is assumed to be increased in future.
 - **Need to confirm a schedule for this project**



2-2) Improve Service of Ennore Port (3)

- Swell Problem in Ennore Port

Proposal for counter measures against Southerly sea and swell



Option 1:
Create Modified breakwater to break S'y sea and swell

Option 2:
create a Break-wall in East-West direction break S'y sea and swell

Option 3:
Expedite CONSTRUCTION of additional berth in North-South direction along existing GCB as alternative to present GCB

